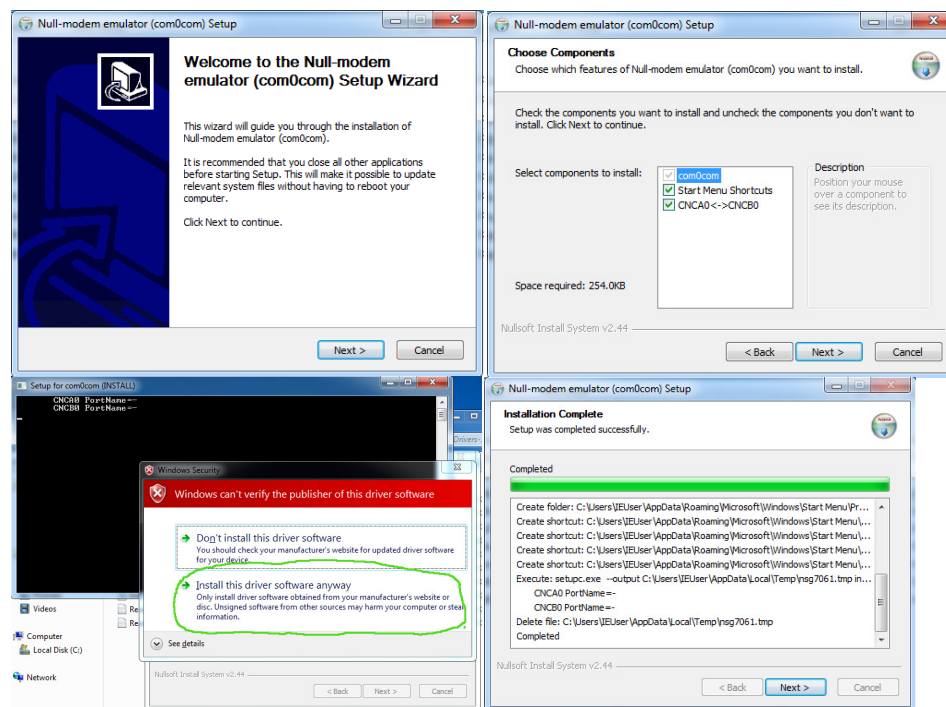
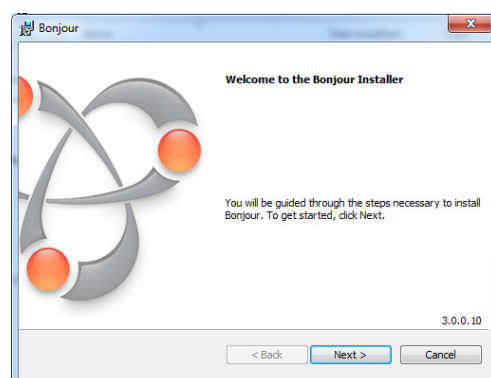


1. Download the Airconsole Windows driver bundle from www.get-console.com/airconsole
2. Extract the bundle to a folder on your computer
3. Install the com0com virtual COM port driver
 - 3a. For 32-bit Windows install com0com-2.2.2.0-setup (32 bit).exe
 - 3b. For 64-bit Windows install com0com-2.2.2.0-setup (64 bit).exe

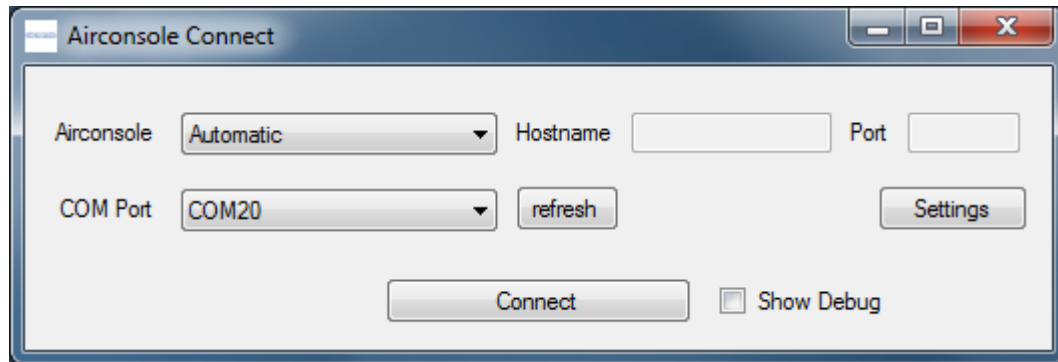


4. (Optional) Ensure that the Bonjour service is available and running. As Bonjour is typically installed automatically with iTunes, if you already have iTunes installed you can skip this step. Bonjour allows automatic discovery of the Airconsole.
 - 4a. For 32-bit Windows install Bonjour.msi
 - 4b. For 64-bit Windows install Bonjour64.msi

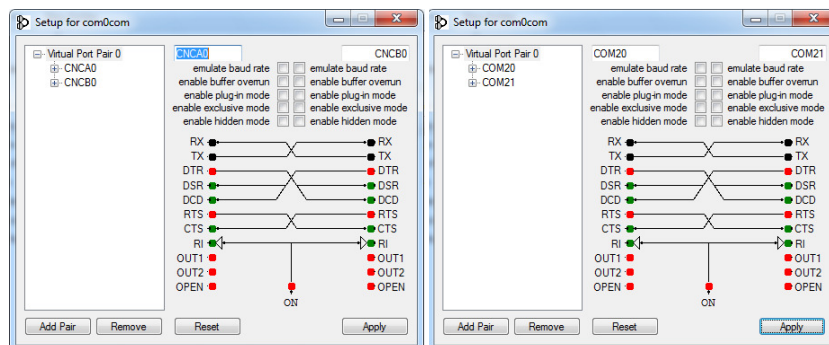


Further information including the latest versions of Bonjour can be found from the Apple support website at <https://developer.apple.com/bonjour/>

5. Run AirConsoleConnect.exe from the extracted folder. The program needs Administrator privileges so you may get an elevation prompt.



6. If this is the first time running AirconsoleConnect it will complain that there are no COM ports available. You will need to add some by pressing the "Settings" button. This will launch the com0com GUI setup utility.



In the setup program press the "Add Pair" button to add a new COM port. By default the COM ports will be called CNCB0/CNCB0 but these can be renamed to any available COM port name. In the example above COM20/COM21 are used. Press the "Apply" button to save any changes.

Continue adding additional COM ports for as many simultaneous serial connections you require.

Close the setup utility and press the "Refresh" button in AirconsoleConnect to update the list of available ports.

7. Choose the Airconsole that you want to connect to using the drop-down menu. Airconsole units on the local network are discovered by mDNS/Bonjour, and detected Airconsoles will be displayed in the combo box. If your Airconsole has multiple serial ports, each will be listed - e.g. Airconsole-XX (port 1), Airconsole-XX-2 (port 2), etc

The other options for Airconsole selection are:

- Automatic - this will select the "best" Airconsole, which will be the first one discovered, or if none have been discovered the default Airconsole settings of 192.168.10.1:3696 will be used
- Manual - this allows you to manually enter an IP Address/Hostname and port number

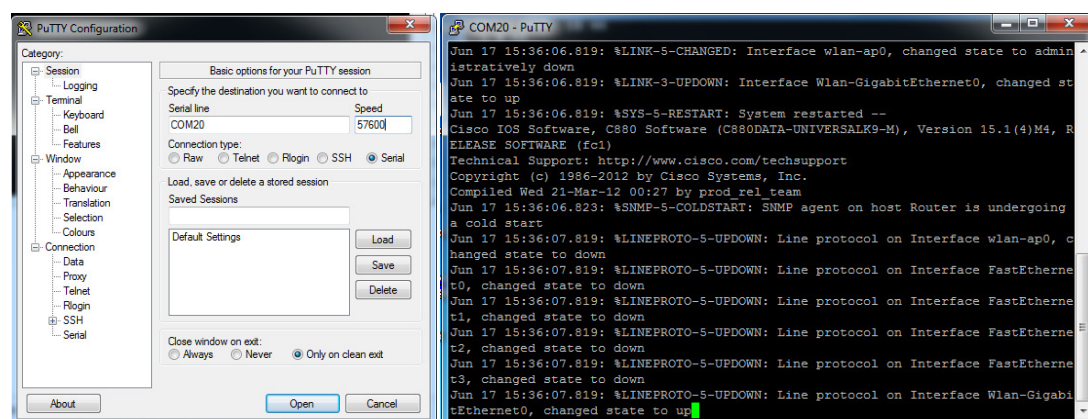
8 . Choose the COM port you want to map the Airconsole to from the COM port combo box. The Combo box lists all com0com virtual COM ports.

9. Press the "Connect" button to make the connection. If you need to troubleshoot the connection for some reason, it is possible to select the "Show Debug" checkbox before connecting.

Note: AirconsoleConnect must stay open to maintain the Airconsole to COM port mapping.

Note: To simultaneously map multiple COM ports to multiple Airconsoles/serial ports, run additional copies of AirconsoleConnect as needed

10. Open a program that wants to use the serial port (Putty in this example) and connect to the COM port chosen in step 8 (COM20 in our example). You should be able to interact as though the COM port were locally attached to your PC. Features such as setting the baud rate and flow control should work as normal.



11. Once finished with the serial connection, press disconnect in AirconsoleConnect to close the COM port to Airconsole mapping