

Airconsole Firmware Upgrade for Original v1.02 Firmware

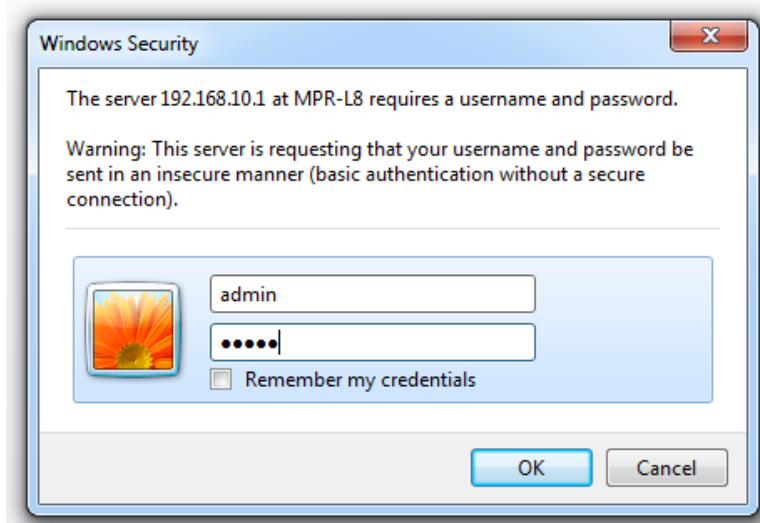
Note: This upgrade procedure is only intended for original devices running version 1.02 or 1.03 of the Airconsole firmware. Later firmware revisions should be updated using the built-in web-based updater at <http://<Airconsole IP>/firmware.asp>

Requirements

- Computer with LAN port running Microsoft Windows (XP or later) or OSX (10.6 or later)
- Physical Ethernet cable connection to Airconsole from Computer
- Airconsole unit running firmware version 1.02
- a FAT-formatted USB thumb drive containing only the files bootstrap.bin and the new Airconsole firmware (e.g. airconsole-1.04.bin)

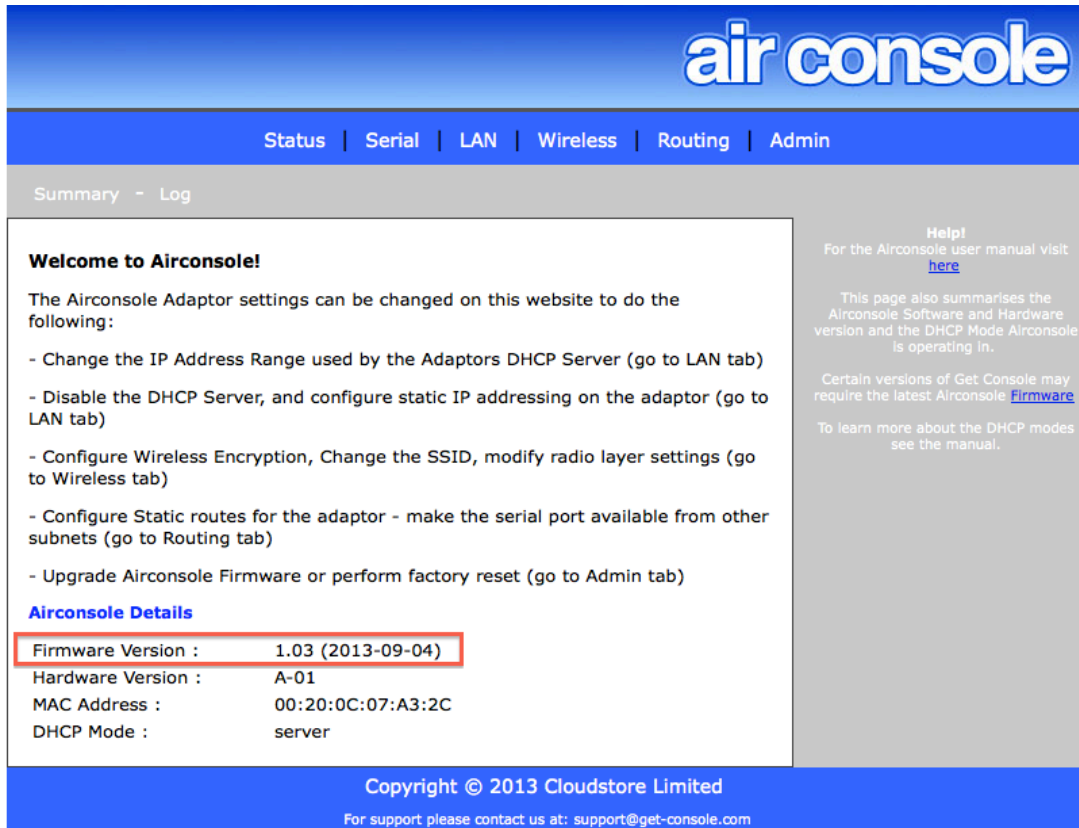
Firmware Upgrade Preparation (Windows and OSX)

1. Power on the Airconsole unit and wait for it to boot
2. Ensure that your computer is connected to the Ethernet port of the Airconsole via cable only. **Connecting via WiFi can lead to an upgrade failure and a broken device**
3. Ensure that you know the IP address of the Airconsole unit and you can connect to the web interface using the default password of **"admin"**.



If the password has been changed from the default, you should change it back to "admin" (it can be changed again after the upgrade). Make a note

of the current firmware version and build date. In example below the version is 1.03 and build date is 2013-09-04.



The screenshot shows the Airconsole web interface. At the top is a blue header with the 'air console' logo. Below it is a navigation bar with links: Status, Serial, LAN, Wireless, Routing, and Admin. The main content area has a 'Summary' tab selected. On the left, under 'Welcome to Airconsole!', there are instructions on how to change settings. On the right, there is a 'Help!' section with a link to the user manual. In the center, under 'Airconsole Details', the 'Firmware Version' is listed as '1.03 (2013-09-04)', which is highlighted with a red box. Other details include Hardware Version (A-01), MAC Address (00:20:0C:07:A3:2C), and DHCP Mode (server). The footer contains copyright information for 2013 Cloudstore Limited and a support email address.

air console

Status | Serial | LAN | Wireless | Routing | Admin

Summary - Log

Welcome to Airconsole!

The Airconsole Adaptor settings can be changed on this website to do the following:

- Change the IP Address Range used by the Adaptors DHCP Server (go to LAN tab)
- Disable the DHCP Server, and configure static IP addressing on the adaptor (go to LAN tab)
- Configure Wireless Encryption, Change the SSID, modify radio layer settings (go to Wireless tab)
- Configure Static routes for the adaptor - make the serial port available from other subnets (go to Routing tab)
- Upgrade Airconsole Firmware or perform factory reset (go to Admin tab)

Airconsole Details

Firmware Version :	1.03 (2013-09-04)
Hardware Version :	A-01
MAC Address :	00:20:0C:07:A3:2C
DHCP Mode :	server

Help!
For the Airconsole user manual visit [here](#)

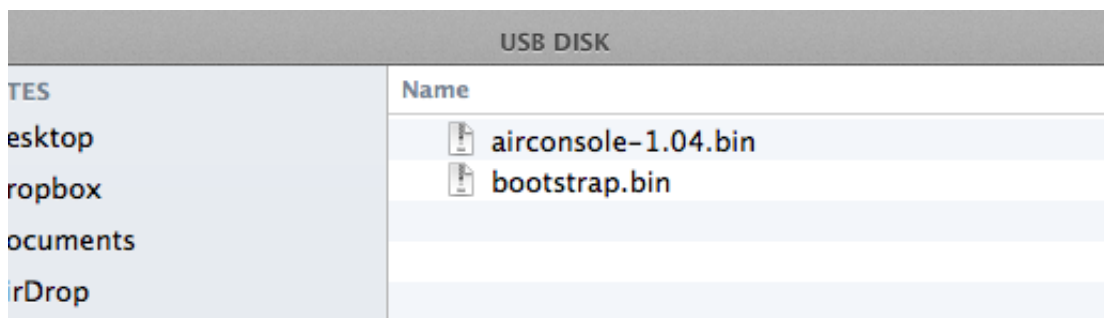
This page also summarises the Airconsole Software and Hardware version and the DHCP Mode Airconsole is operating in.

Certain versions of Get Console may require the latest Airconsole [Firmware](#)

To learn more about the DHCP modes see the manual.

Copyright © 2013 Cloudstore Limited
For support please contact us at: support@get-console.com

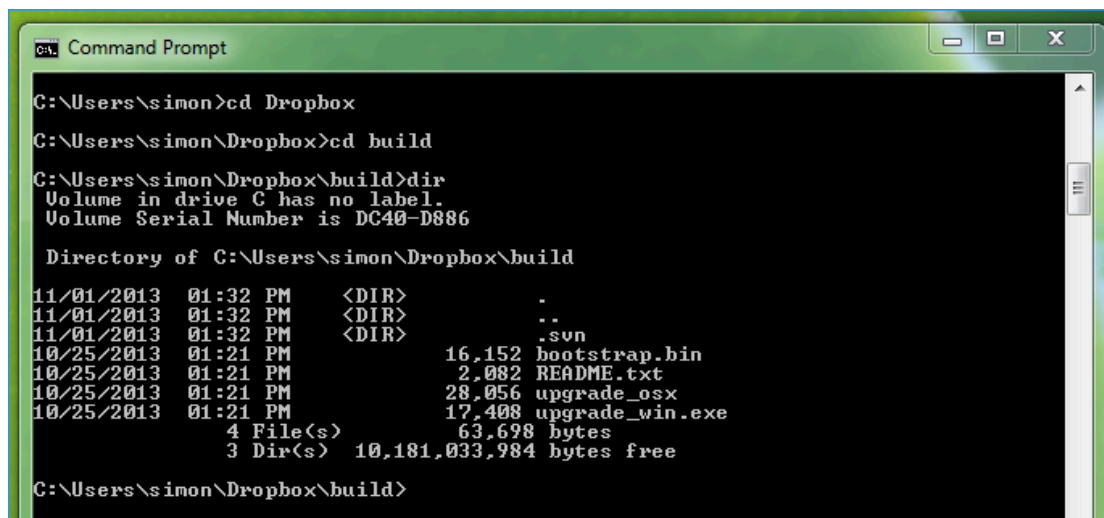
4. Copy the files **bootstrap.bin** and the new Airconsole firmware file (e.g. **airconsole-1.04.bin**) to a **FAT-formatted** USB thumb drive. The drive should contain **no other files**



5. Connect this USB drive to the Airconsole USB port and proceed to launch the Windows or OSX upgrade program depending on your operating system.

Firmware Upgrade Method for Windows

The upgrade_win.exe program must be run from a windows command prompt. Open up a command prompt window and navigate to the directory on your PC that has the upgrade_win.exe file.



```
CA: Command Prompt

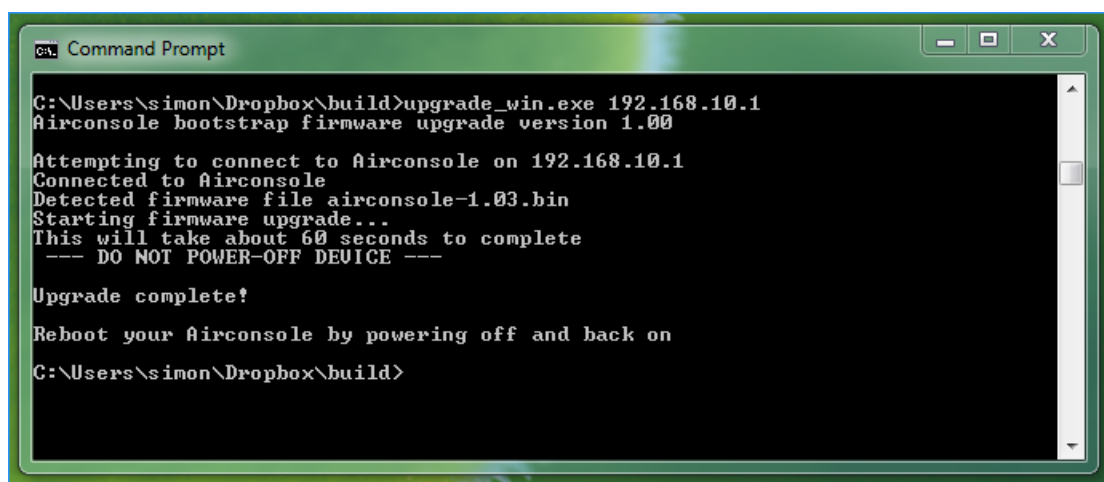
C:\Users\simon>cd Dropbox
C:\Users\simon\Dropbox>cd build
C:\Users\simon\Dropbox\build>dir
Volume in drive C has no label.
Volume Serial Number is DC40-D886

Directory of C:\Users\simon\Dropbox\build

11/01/2013  01:32 PM    <DIR>          .
11/01/2013  01:32 PM    <DIR>          ..
11/01/2013  01:32 PM    <DIR>          .svn
10/25/2013  01:21 PM             16,152 bootstrap.bin
10/25/2013  01:21 PM              2,082 README.txt
10/25/2013  01:21 PM             28,056 upgrade_osx
10/25/2013  01:21 PM             17,408 upgrade_win.exe
               4 File(s)              63,698 bytes
               3 Dir(s)  10,181,033,984 bytes free

C:\Users\simon\Dropbox\build>
```

Start the upgrade with the command: **upgrade_win.exe 192.168.10.1**



```
CA: Command Prompt

C:\Users\simon\Dropbox\build>upgrade_win.exe 192.168.10.1
Airconsole bootstrap firmware upgrade version 1.00

Attempting to connect to Airconsole on 192.168.10.1
Connected to Airconsole
Detected firmware file airconsole-1.03.bin
Starting firmware upgrade...
This will take about 60 seconds to complete
--- DO NOT POWER-OFF DEVICE ---

Upgrade complete!

Reboot your Airconsole by powering off and back on

C:\Users\simon\Dropbox\build>
```

- The upgrade process will then perform some basic tests before starting the upgrade process
- During the upgrade process it is important that you do not power off your device until instructed - doing so may leave your Airconsole unusable
- The upgrade process should take around 1 - 2 minutes to complete.

After the upgrade process has completed, power cycle the Airconsole unit by turning it off and then on again. Wait for about 40 seconds until the blue light on the top of the Airconsole has been blinking for around 10 seconds.

Login again to the Airconsole webpage at 192.168.10.1 and observe the updated firmware version and/or build date.

air console

[Status](#) | [Serial](#) | [LAN](#) | [Wireless](#) | [Routing](#) | [Admin](#)

[Summary](#) - [Log](#)

Welcome to Airconsole!

The Airconsole Adaptor settings can be changed on this website to do the following:

- Change the IP Address Range used by the Adaptors DHCP Server (go to LAN tab)
- Disable the DHCP Server, and configure static IP addressing on the adaptor (go to LAN tab)
- Configure Wireless Encryption, Change the SSID, modify radio layer settings (go to Wireless tab)
- Configure Static routes for the adaptor - make the serial port available from other subnets (go to Routing tab)
- Upgrade Airconsole Firmware or perform factory reset (go to Admin tab)

Airconsole Details

Firmware Version :	1.04 (2013-11-01 build 270)
Hardware Version :	A-01
MAC Address :	00:20:0C:07:A3:2C
DHCP Mode :	server

Help!
For the Airconsole user manual visit [here](#)

This page also summarises the Airconsole Software and Hardware version and the DHCP Mode Airconsole is operating in.

Certain versions of Get Console may require the latest Airconsole [Firmware](#)

To learn more about the DHCP modes see the manual.

Copyright © 2013 Cloudstore Limited

For support please contact us at: support@get-console.com

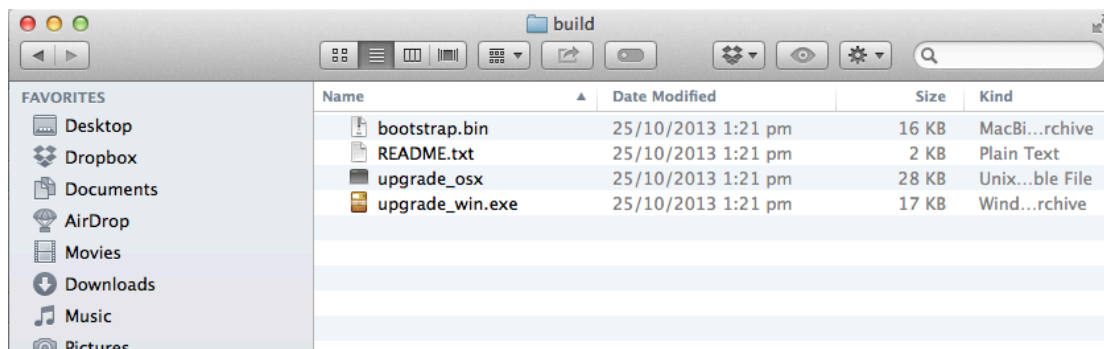
For more details visit the website <http://www.get-console.com/airconsole>

Firmware Upgrade Method for Mac OSX



The upgrade_osx program must be run from a terminal prompt. Open up a terminal window and navigate to the directory on your mac that has the upgrade_osx file.

From a terminal window run the following command (replacing the IP address with the actual IP address of the Airconsole unit if it is not 192.168.10.1)



./upgrade_osx 192.168.10.1

```

simon-hopes-macbook-pro-2:build simon$ ./upgrade_osx 192.168.10.1
Airconsole bootstrap firmware upgrade version 1.00

Attempting to connect to Airconsole on 192.168.10.1
Connected to Airconsole
Detected firmware file airconsole-1.03.bin
Starting firmware upgrade...
This will take about 60 seconds to complete
--- DO NOT POWER-OFF DEVICE ---

Upgrade complete!

Reboot your Airconsole by powering off and back on
simon-hopes-macbook-pro-2:build simon$ █

```

- The upgrade process will then perform some basic tests before starting the upgrade process
- During the upgrade process it is important that you do not power off your device until instructed - doing so may leave your Airconsole unusable
- The upgrade process should take around 1 - 2 minutes to complete.

After the upgrade process has completed, power cycle the Airconsole unit by turning it off and then on again. Wait for about 40 seconds until the blue light on the top of the Airconsole has been blinking for around 10 seconds.

Login again to the Airconsole webpage at 192.168.10.1 and observe the updated firmware version and/or build date.

air console

Status | Serial | LAN | Wireless | Routing | Admin

Summary - Log

Welcome to Airconsole!

The Airconsole Adaptor settings can be changed on this website to do the following:

- Change the IP Address Range used by the Adaptors DHCP Server (go to LAN tab)
- Disable the DHCP Server, and configure static IP addressing on the adaptor (go to LAN tab)
- Configure Wireless Encryption, Change the SSID, modify radio layer settings (go to Wireless tab)
- Configure Static routes for the adaptor - make the serial port available from other subnets (go to Routing tab)
- Upgrade Airconsole Firmware or perform factory reset (go to Admin tab)

Airconsole Details

Firmware Version :	1.04 (2013-11-01 build 270)
Hardware Version :	A-01
MAC Address :	00:20:0C:07:A3:2C
DHCP Mode :	server

Help!
For the Airconsole user manual visit [here](#)

This page also summarises the Airconsole Software and Hardware version and the DHCP Mode Airconsole is operating in.

Certain versions of Get Console may require the latest Airconsole [firmware](#)

To learn more about the DHCP modes see the manual.

Copyright © 2013 Cloudstore Limited
For support please contact us at: support@get-console.com

For more details visit the website <http://www.get-console.com/airconsole>