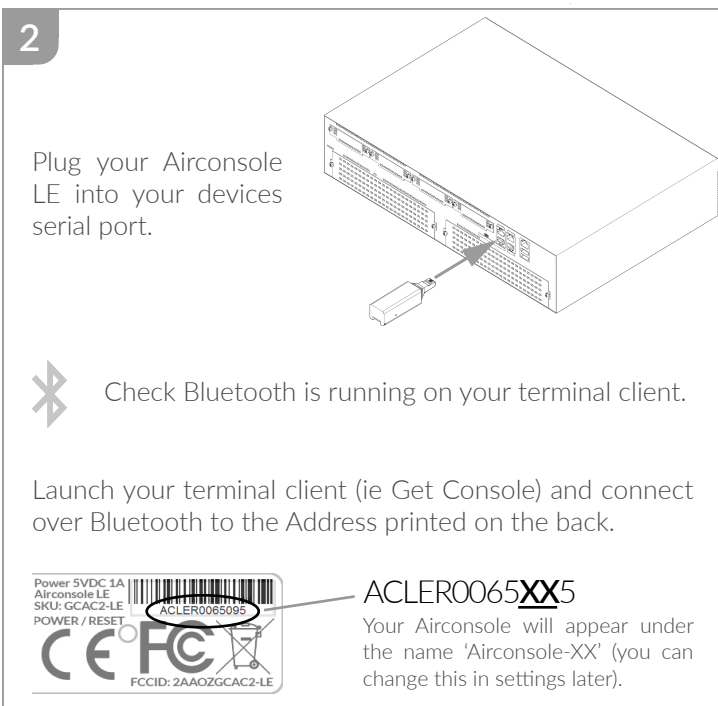
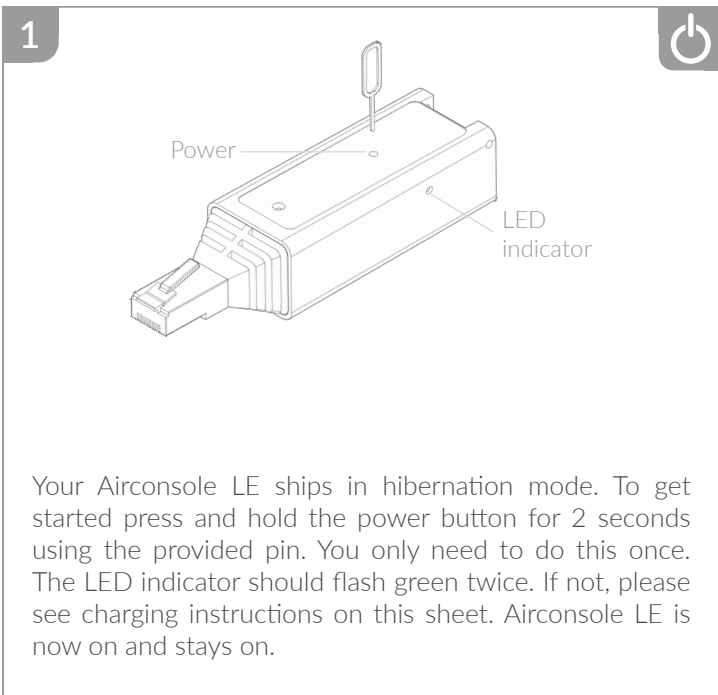
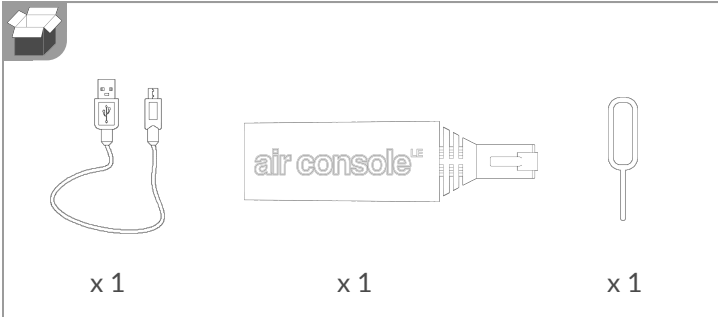
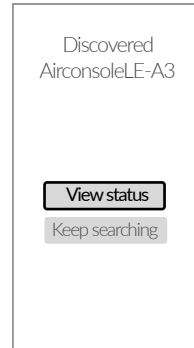


# air console<sup>LE</sup>

Quick start guide



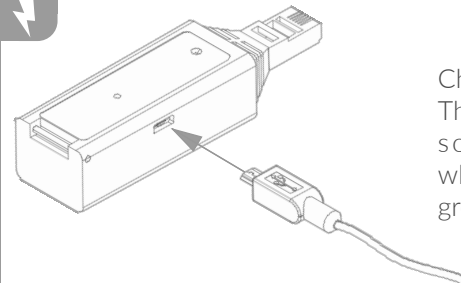
To modify your Airconsole LE settings download and install "Airconsole Quickstart" from the Apple App store.



Your Airconsole LE will appear after scanning. Select "View status" to see default configuration.

Hostname	Airconsole LE-A3
Serial Number	020101010013
Password	Admin
Serial	
Baud Rate	9600 >
Databits	8 >
Parity	None >
Stopbits	1 >
Bluetooth	
Security Level	No Security >
Security Pin	
Bluetooth LE Mode	Fast >
Bluetooth	
Telnet Auth	<input type="checkbox"/>
Push	

Select edit if you wish to change settings. Tap push to confirm changes. Your Airconsole LE will automatically reboot.



Charging:  
The indicator will go solid red/orange when charging. Solid green indicates a full

LED Indication	Operation mode	Description
Flashing every 45 seconds	Sleep/Active	Device on, battery level is good
Flashing every 45 seconds	Sleep/Active	Device on, battery level is low
Flashing every 5 seconds	Active	Serial port active
Solid	Sleep/Active	Device charging
Solid	Sleep/Active	Device fully charged
Fade out over 2 seconds	Sleep/Active	Device off

You are now ready to use your airconsole LE.

For the full user guide, please go to [www.get-console.com/support](http://www.get-console.com/support).

